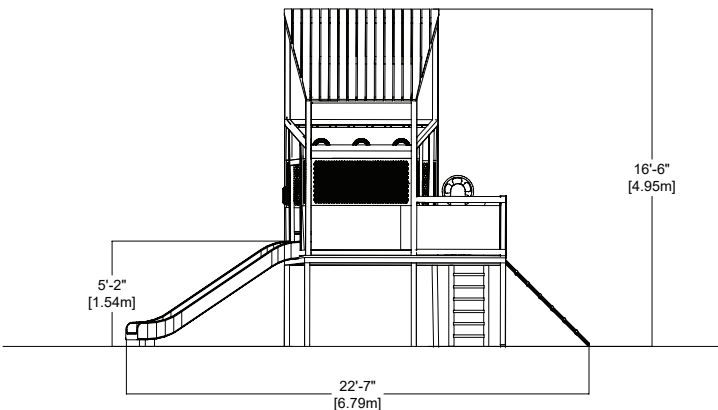
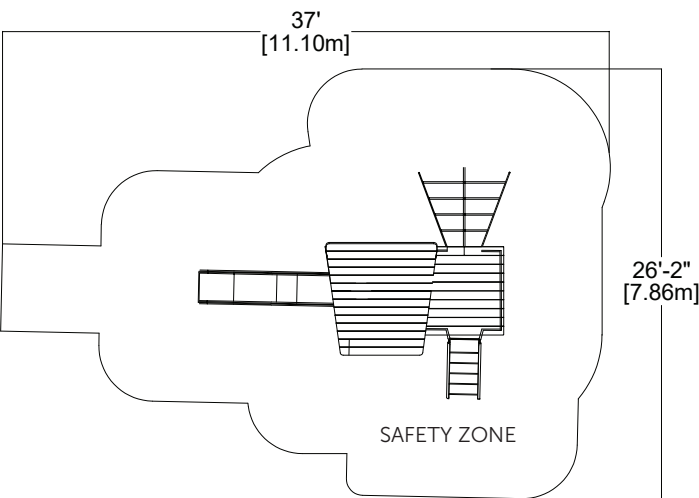


Playhouse with accessories
EP-TOD-EPM2000 (CSA)



CHARACTERISTICS

Age Group : 18 months - 12 years old
 Height : 16'-6" (4.95m)
 Capacity : Varies depending on accessories
 Safety Zone : none if the structure is installed directly on the ground OR
 37' x 26'-2" (11.1m x 7.86m)

MATERIALS

Structure : wood or plastic wood; galvanized or powder coated steel;
 Accessories and grate : galvanized or powder coated steel;
 *All painted parts are powder coated with a UV-resistant polyester.
 **Can be accessorized with climbers and/or slides.

ANCHORS TYPE

Concrete base footing or free standing steel structure.

PLAY VALUE

The Playhouse stimulates the creativity of the children, since they can create a different universe every time they visit. It also allows group play and, thus, promotes interaction between kids.
 The Playhouse can be installed on the ground or higher up, in which case the different ways to climb to get there develop the agility and motor skills of the child; the slide to go down make every one have fun, while allowing to develop balance and discover the speed.

AVAILABLE COLORS - STRUCTURE



AVAILABLE COLORS - CABLES

